

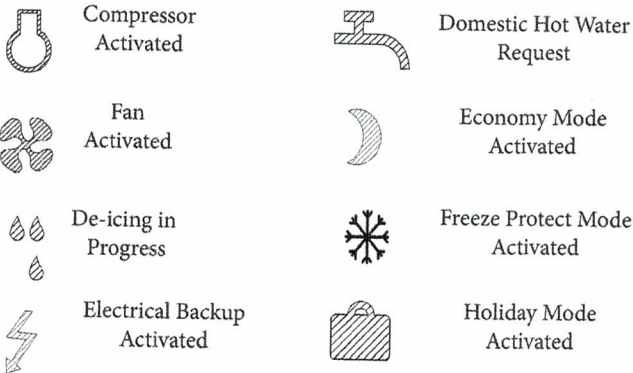
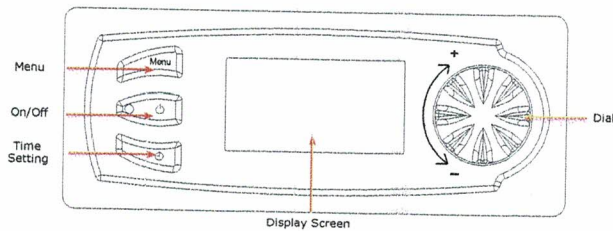
7.2 Using your Hot Water Heat Pump

The hot water heat pump mainly operates with the heat pump, as long as the air intake temperature remains in the authorised - 7°C to + 35°C range. Outside of this range, electrical backup ensures that the domestic hot water is heated.

The domestic hot water temperature provided by the heat pump is adjustable up to 60°C. In case of high domestic hot water consumption, the domestic hot water heater has a comfort function which increases the heating capacity when there is less than 1/3 of the tank's volume left at over 38°C (see Section 7.10.2.3). There is also a setting to activate electrical backup if the heating time is too long.

If more domestic hot water is required from time to time, the heat pump water heater has a "Boost" function (activated by the user) which ensures that the water heats to the desired temperature (for example : 50°C) quickly with the help of the heat pump and electrical backup. This function is deactivated as soon as the required temperature is reached. From time to time, check that there are no alerts (in case of an alert, please refer to Section 8.5).

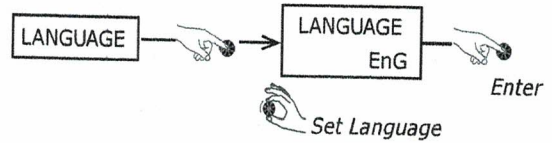
7.3 Control Box



7.4 Setting the Language

The language must be selected when the appliance is turned on for the first time. Turn the dial to the left, select 'English' and press the dial to confirm. The language menu can be accessed at any time.

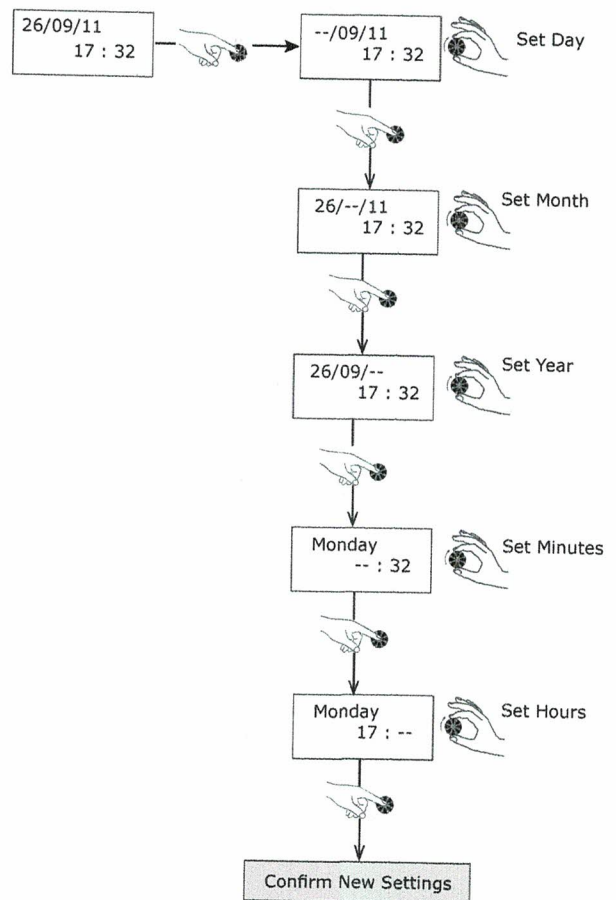
- Press 'Menu'.
- Turn the dial to scroll through the menu options:



- Press 'Menu' to return to the main screen.

7.5 Setting the Time

- Press 'Clock':

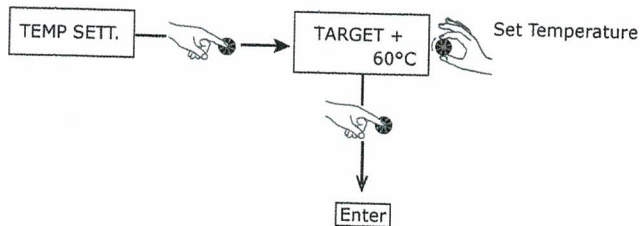


- See section 7.11 for instructions to gain access to installer menu

7.6 Setting the Water Temperature

The water temperature can be adjusted between 30°C and 65°C. The heat pump alone heats the water up until 60°C. Beyond this temperature, up to 65°C, the electrical backup immersion takes over.

- Press 'Menu'.
- Turn the dial to scroll through the menu options:

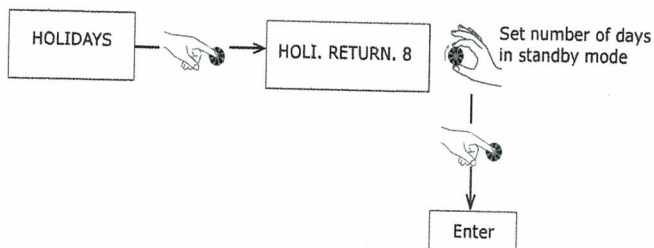


- Press 'Menu' to return to the main screen
- In order to get the best from your heat pump, we recommend that you do not leave the set water temperature too high unless necessary. The default temperature is set at 60°C.

7.7 Holiday Mode

'Holiday' mode puts the appliance on standby whilst the freeze protection mode remains active. This function can be programmed to run between 1 and 99 days and is effective as soon as the number of days has been confirmed.

- Press 'Menu'.
- Turn the dial to scroll through the menu options:



- Press 'Menu' to return to the main screen.

'HOLIDAY' mode switches off automatically at the same time when the number of days set has ended. Throughout the holiday period, the heat pump water heater shows 'Holi. Return.' on the display screen, as well as a countdown of the days.

-To cancel holiday mode select 0 days

7.8 BOOST Function (for occasional use)

The 'BOOST' function temporarily uses both the immersion heater and the heat pump to increase the temperature during a heating cycle. The "electrical backup" symbol flashes while it is activated.

- Press 'Menu'.
- Turn the dial to scroll through the menu options:



- Press 'Menu' to return to the main screen

The 'BOOST' function is automatically deactivated as soon as the set temperature is reached (end of heating cycle).

- 'BOOST' can be cancelled by selecting 'no' in the menu

7.9 Electric Mode (to operate with electrical backup)

Electric mode uses only the immersion heater to heat the water in the heat pump water heater. It provides a back-up option if for any reason the heat pump is not running (ducting not yet connected, dusty renovation work being carried out near the appliance....). This can be turned off if preferred.

- Press 'Menu'.
- Turn the dial to scroll through the menu options:



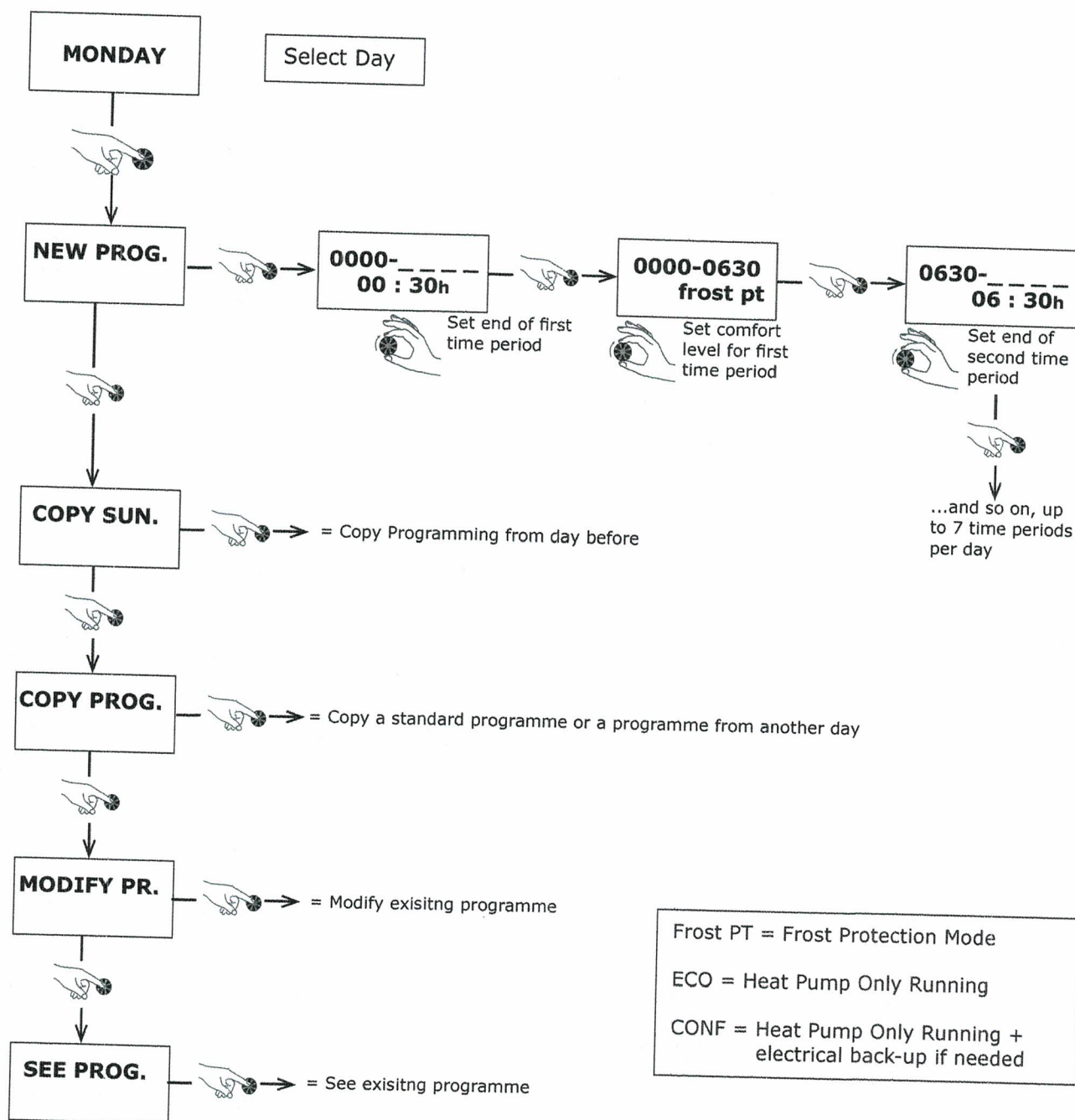
- Press 'Menu' to return to the main screen.

7.10 Programming

Programming enables you to define the periods of time the appliance runs in 'Economy', 'Comfort' or 'Off' mode (freeze protection mode). Electrical backup is not allowed while the appliance is in 'Economy' mode.

To access the program menu:

- Press the 'Clock'.
- Press down for 3 seconds until the screen display 'Settings'.



Heating time for the tank varies according to the outdoor temperature.